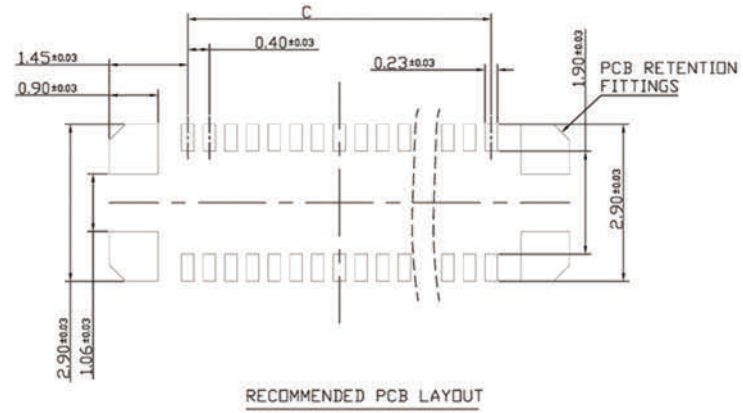


- Specifications:
- Material:
    - Molded portion: LCP resin ( UL94 V-0)
    - Contact and Post: Copper alloy.
  - Surface treatment:
    - Terminal portion: Base: Ni plating Surface: Au plating (except the terminal tips) ; Exposed nickel portions.
    - Metal clips: Base: Ni plating Surface: Au flash plating (except the terminal tips) Or Base: Ni plating Surface: Sn flash plating (except the terminal tips)
  - Characteristics:
    - Rated voltage: 60V AC/DC
    - Rated current: 0.3A/contact (Max. 5A at total contact)
    - Insulation resistance: Min. 1000MΩ (initial)
    - Breakdown voltage: 150V AC for 1 min.
    - Saltwater spray resistance (header and socket mated): 24 hours, insulation resistance min.100MΩ, contact resistance max. 90mΩ
    - Contact resistance: Max. 90mΩ
    - Ambient temperature: -55℃~+85℃
    - Storage temperature: -55℃~+85℃ (product only); -40℃~+50℃ (emboss packing)
    - Composite insertion force: Max. 0.981N/contacts X contacts (initial)
    - Composite removal force: Min. 0.165N/contacts X contacts
    - Post holding force: Min. 0.49N/contacts
    - Insertion and removal life: 50 times

TABLE:

70	16.50	15.40	13.60
50	12.50	11.40	9.60
40	10.50	9.40	7.60
34	9.30	8.20	6.40
30	8.50	7.40	5.60
24	7.30	6.20	4.40
10	4.50	3.40	1.60
NUMBER OF CONTACTS	A	B	C



UNITS:		<b>CSCONN</b>	CSCONN PRECISE ELECTRONICS CO.,LTD			
mm GENERAL TOLERANCE			PART NO.(INTENDED USE) CBT-0410XXF-08	TITLE: BTB 0.4MM XP FEMALE H=0.8MM		
X. ° ±5°	0. X±0.25	APPD:	DWG NO. BTB			
X. 1±2°	0. XX±0.2	CHKD: Skila		SCALE	SHEET	REV
XX. ±1°	0. XXX±0.1	DR: Kitty		1:1	1 OF 1	A