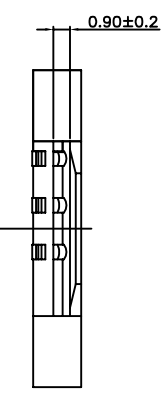


**TECHNICAL CHARACTERISTICS**

- General characteristics  
Contact principle: Friction technology  
Operating position: Shaft up/down/horizontal  
Mounting System: Smt (Post Optional)  
Durability: 5000 cycles min.
- Mechanical characteristics:  
Insulation material: Thermoplastic, UL 94V-0
- Electrical Characteristics  
Number of contacts (Optional): 6pins or 8pins  
Contact resistance: 50mΩ initial, 100mΩ max  
Insulation resistance: >1000MΩ / 500V DC
- Solder ability  
Wave: Not applicable  
Vaporphase: 215°C, 30sec. Max  
IR reflow: 250°C, 15sec. Max  
Manual soldering: 360°C, 3sec. Max
- Environmental Characteristics  
Operating temperature: -40°C ~ +85°C  
Operating humidity: 10% ~ +95%RH  
Storage temperature: -40°C ~ +85°C  
Storage humidity: 10% ~ +95%RH  
Thermal shock: -40°C ~ +85°C, 5cycles.  
Damp heat: 40°C, 90%RH, 100dys.  
Salt-mist: 35°C, 5%NaCl, 24H



UNITS: mm	<b>CSCONN</b>
GENERAL TOLERANCE	
X, ° ±5°	
X, 1±2°	
APPD:	PART NO. (INTENDED USE)
CHKD: Sk11a	CS108291726003
DR: Kitty	

CSCONN PRECISE ELECTRONICS CO.,LTD	
TITLE: SIM CARD 8P H=2.6MM 掀盖式	
DWG NO.	SIM CARD
SCALE	SHEET
1:1	1 OF 2
REV	A